

表1 調査病院の病床規模別概要

	20-49床	50-99床	100-149床	150-199床	200床以上
施設数	216	763	622	622	1769
平均薬剤師数	1.7	2.1	3.0	4.2	11.0
平均助手数	0.4	0.5	0.6	0.8	1.6

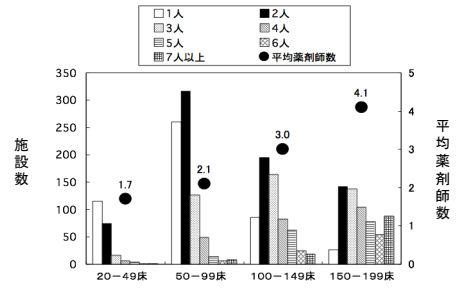


図0-1 病床規模別薬剤師数の分布と平均薬剤師数

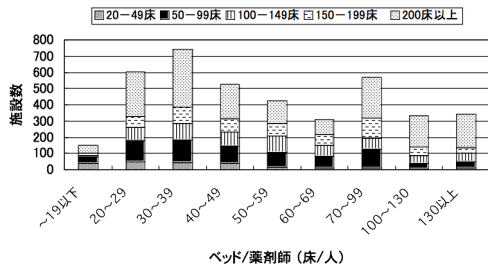


図0-2 ベッド/薬剤師と施設数の関係(外来処方補正後)(病床規模別)

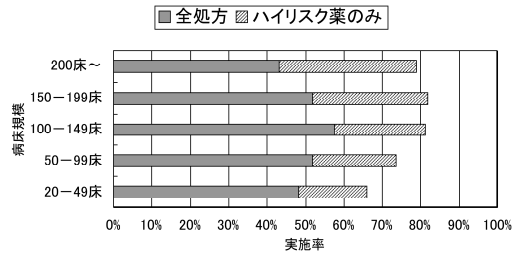


図1-1 「薬歴に基づく処方鑑査」(入院)の実施状況(病床規模別) %

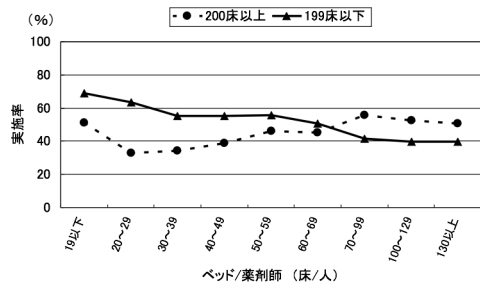


図1-2 「薬歴に基づく全処方鑑査」(入院)実施率とベッド/薬剤師の関係

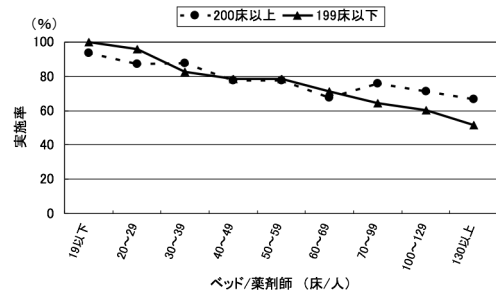
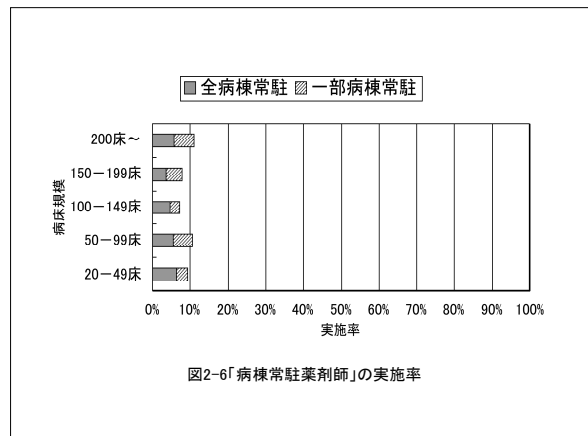
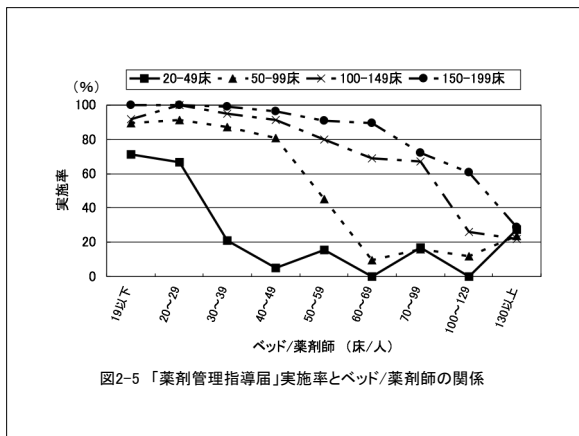
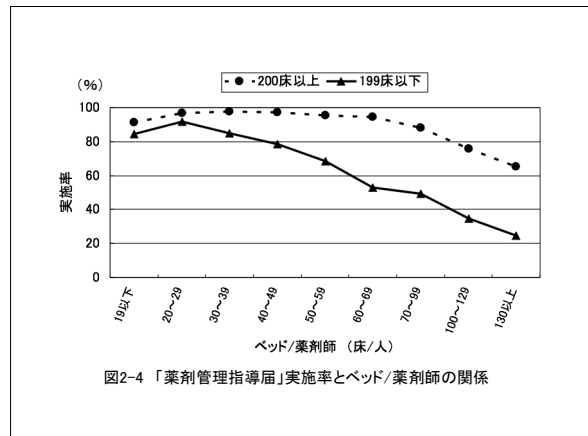
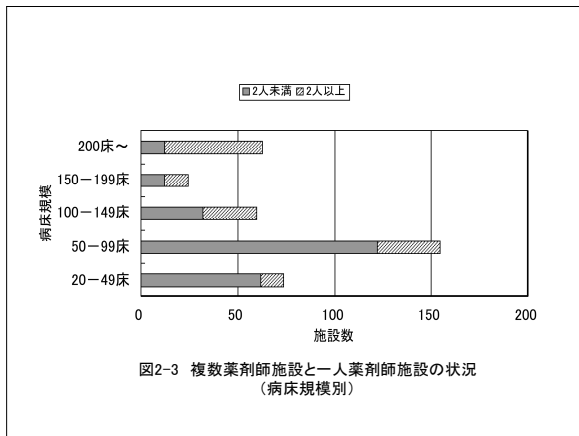
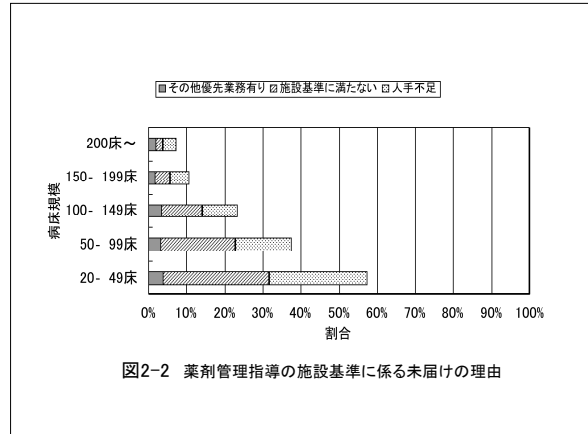
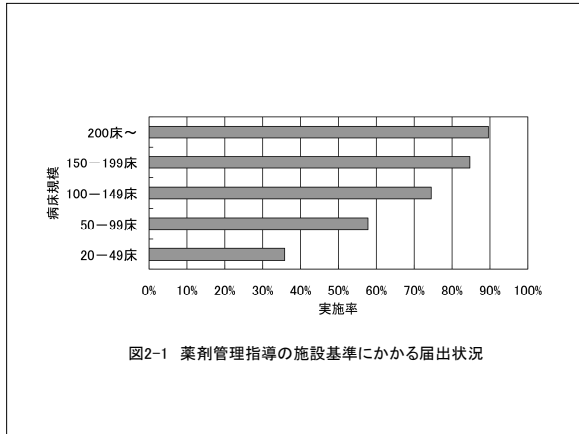


図1-3 「(全処方+ハイリスク薬)の薬歴に基づく処方鑑査」(入院)実施率とベッド/薬剤師の関係



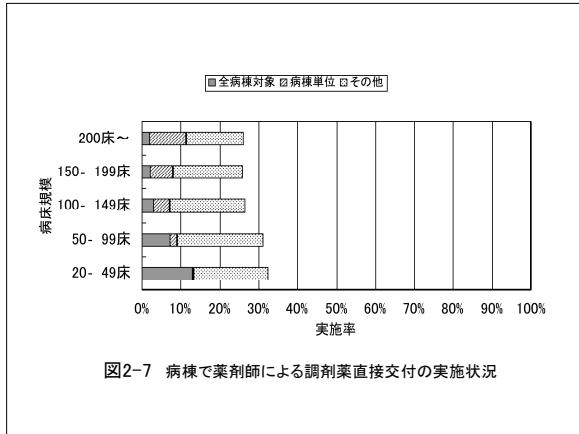


図2-7 病棟で薬剤師による調剤薬直接交付の実施状況

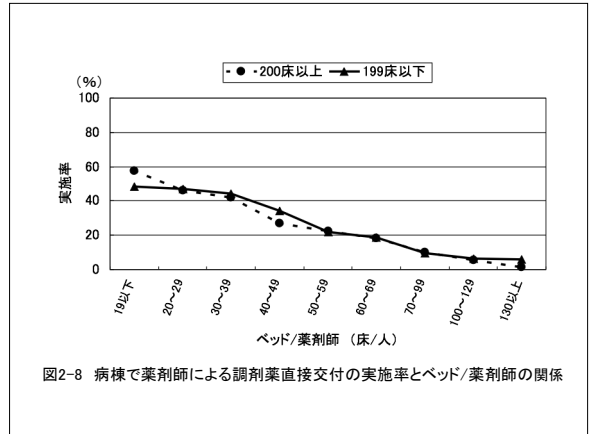


図2-8 病棟で薬剤師による調剤薬直接交付の実施率とベッド/薬剤師の関係

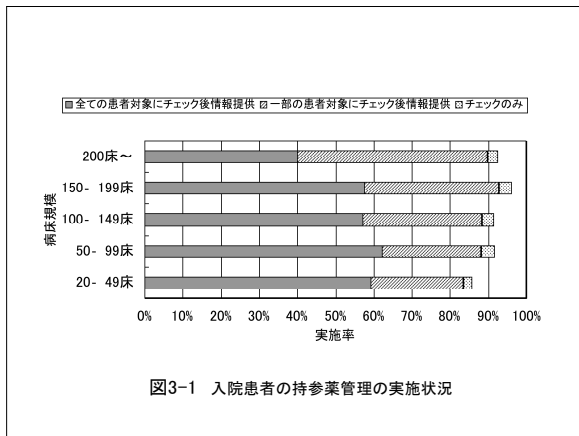


図3-1 入院患者の持参薬管理の実施状況

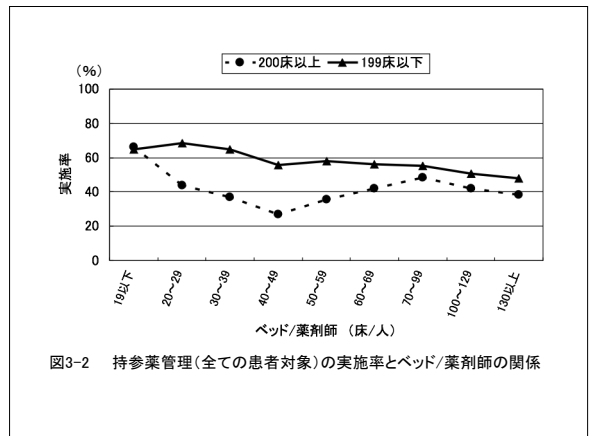


図3-2 持参薬管理(全ての患者対象)の実施率とベッド/薬剤師の関係

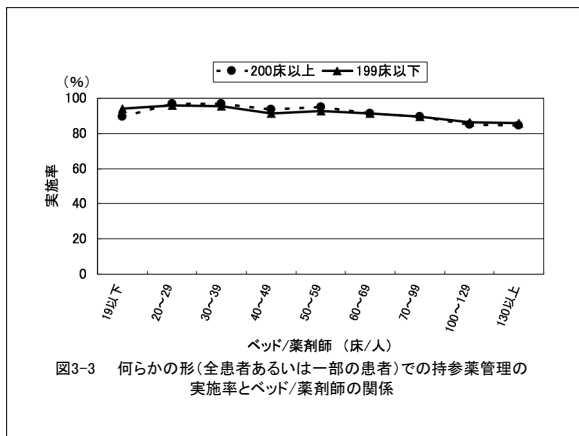


図3-3 何らかの形(全患者あるいは一部の患者)での持参薬管理の実施率とベッド/薬剤師の関係

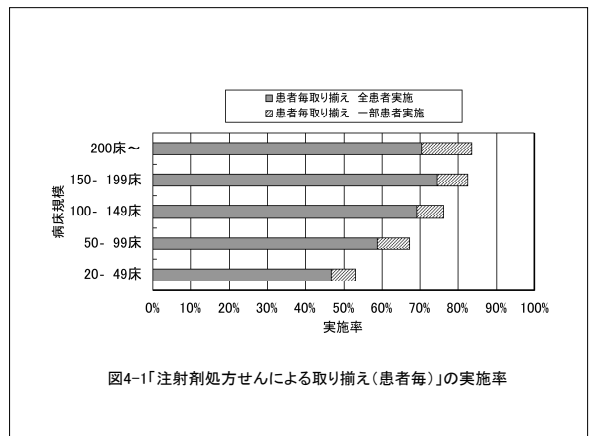
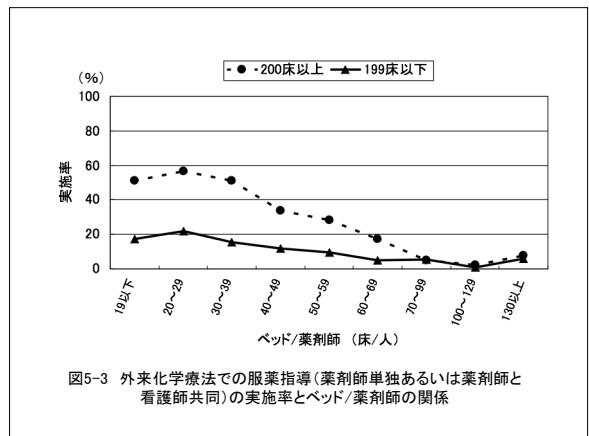
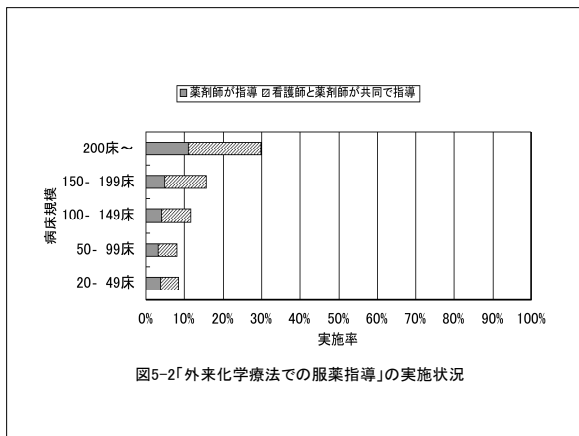
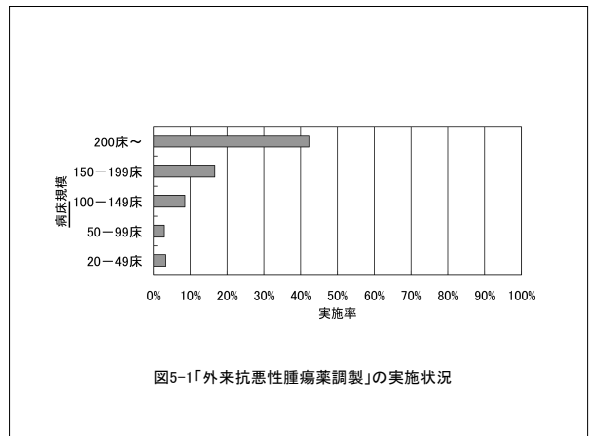
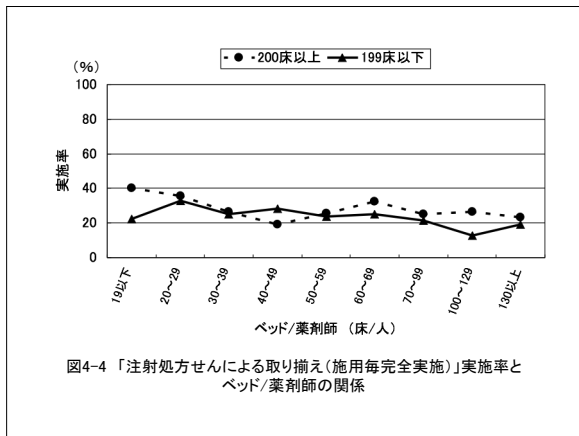
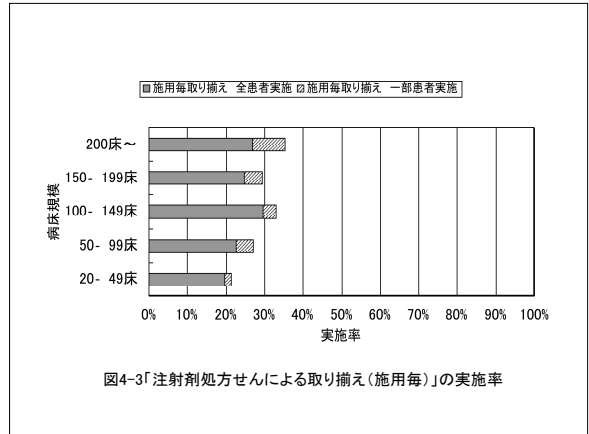
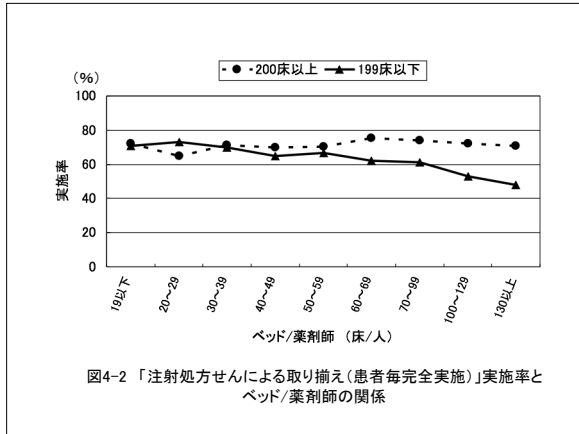


図4-1「注射剤処方せんによる取り揃え(患者毎)」の実施率



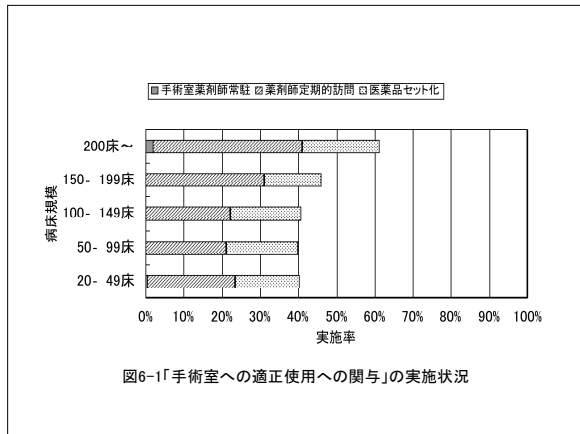


図6-1 「手術室への適正使用への関与」の実施状況

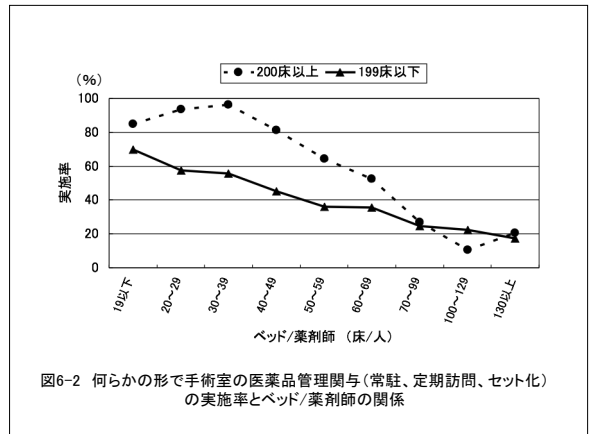


図6-2 何らかの形で手術室の医薬品管理関与(常駐、定期訪問、セット化)の実施率とベッド/薬剤師の関係

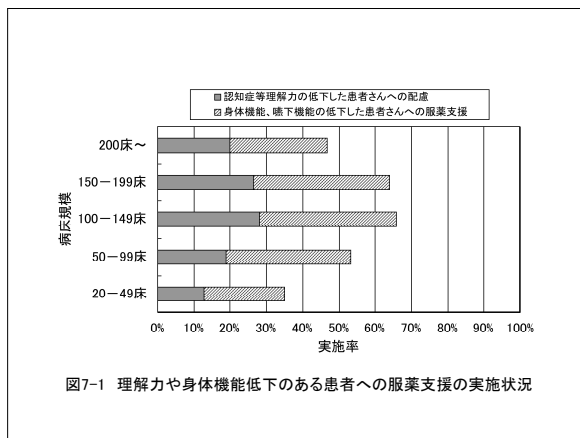


図7-1 理解力や身体機能低下のある患者への服薬支援の実施状況

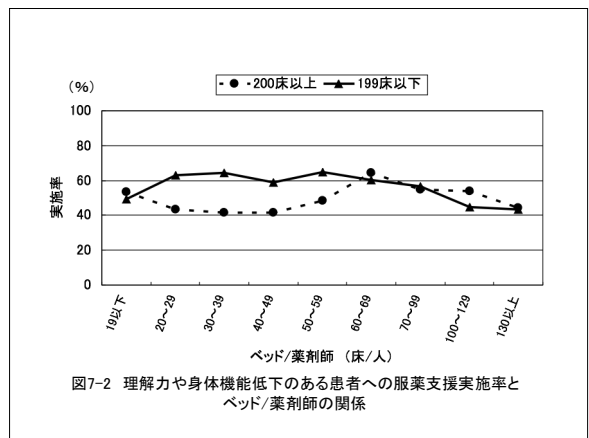


図7-2 理解力や身体機能低下のある患者への服薬支援実施率とベッド/薬剤師の関係

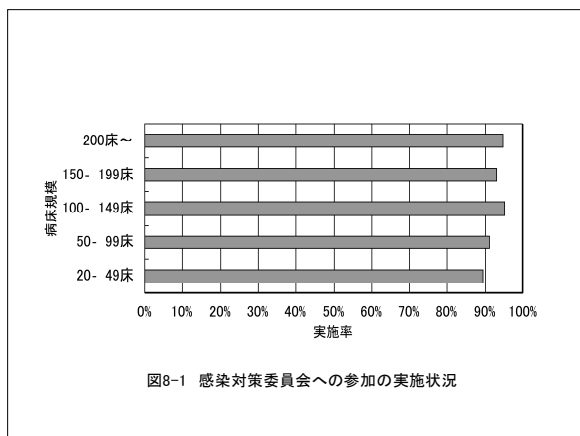


図8-1 感染対策委員会への参加の実施状況

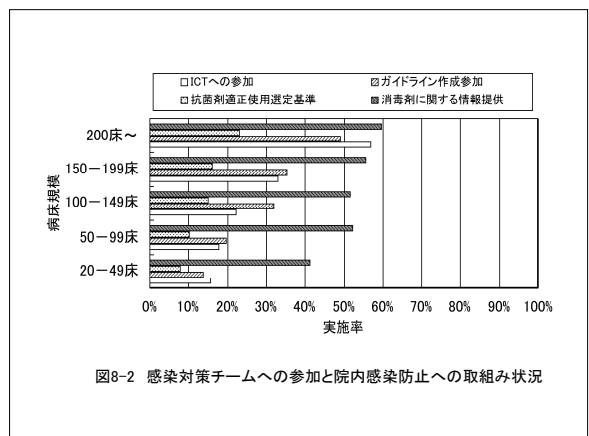
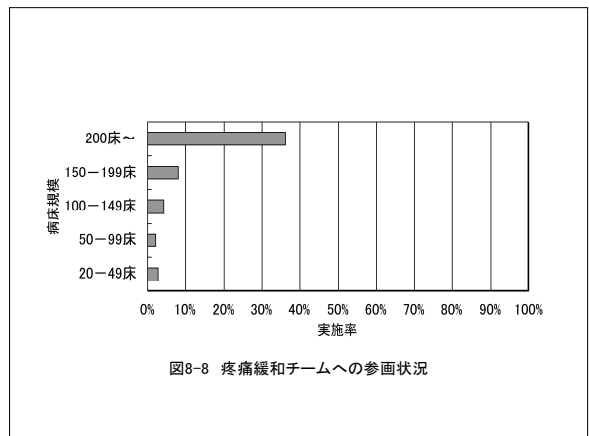
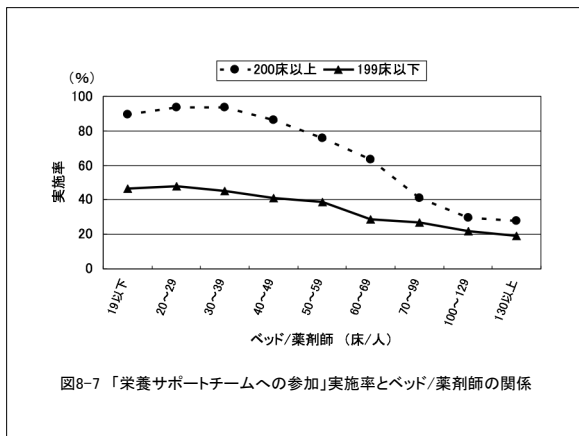
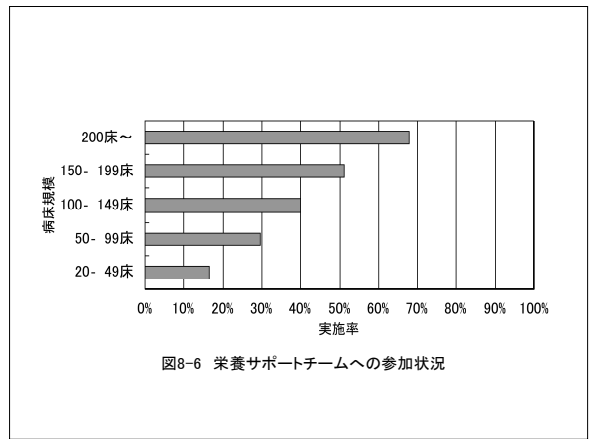
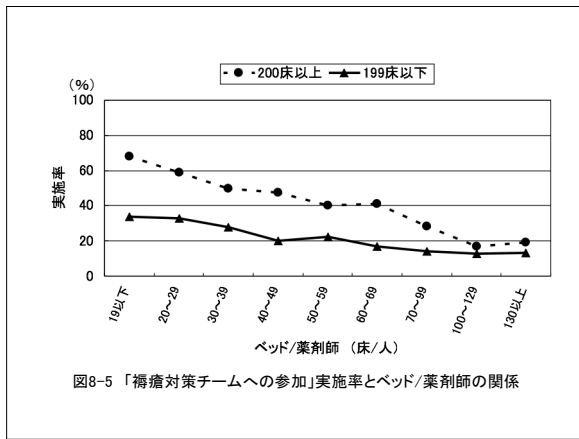
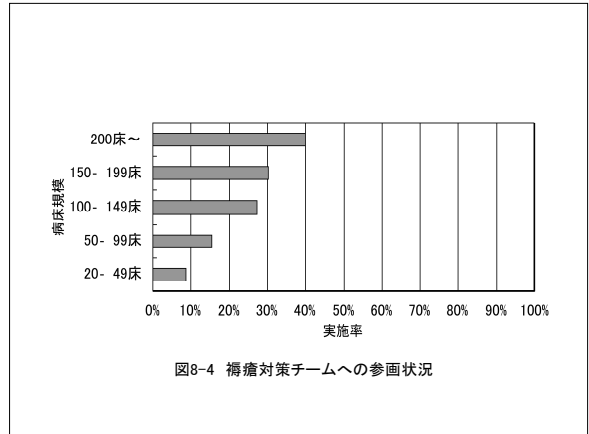
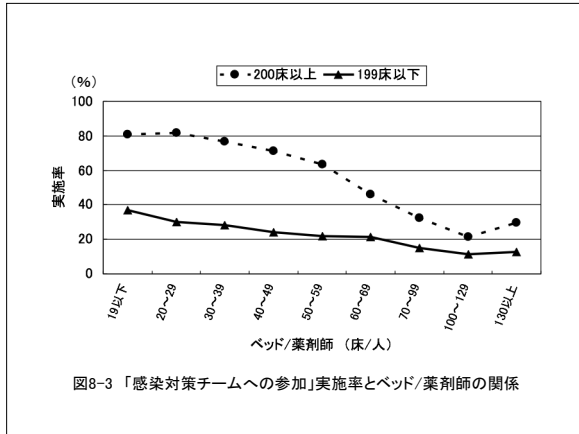
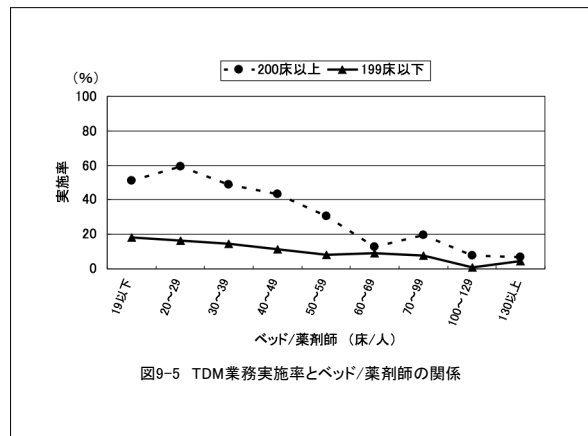
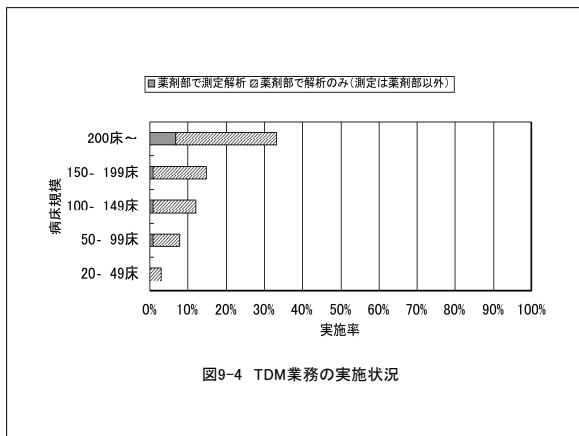
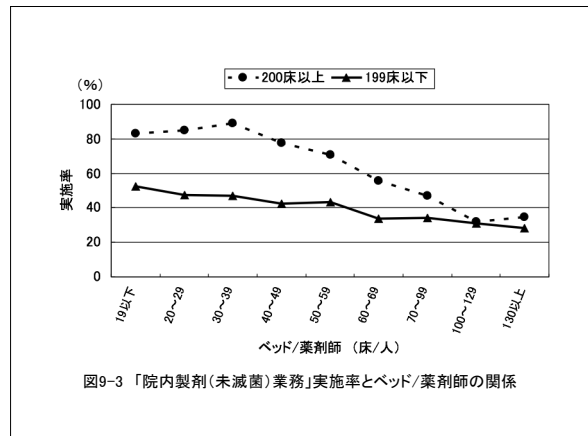
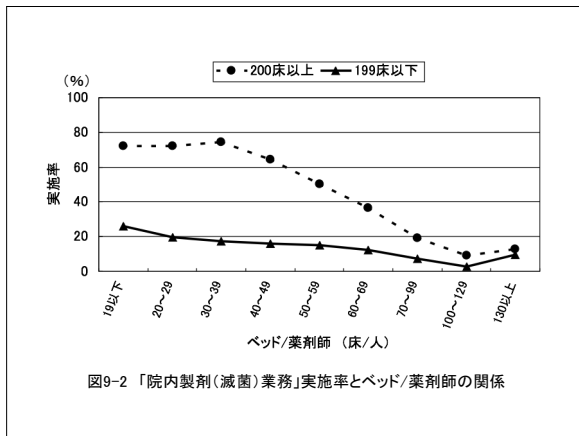
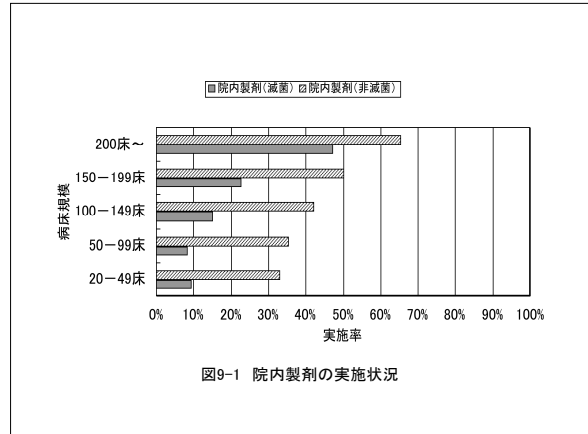
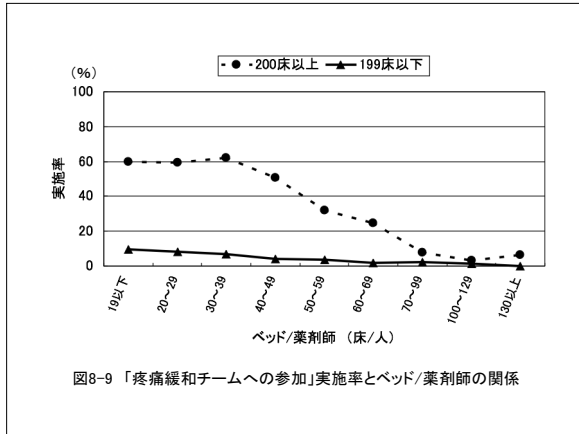


図8-2 感染対策チームへの参加と院内感染防止への取り組み状況





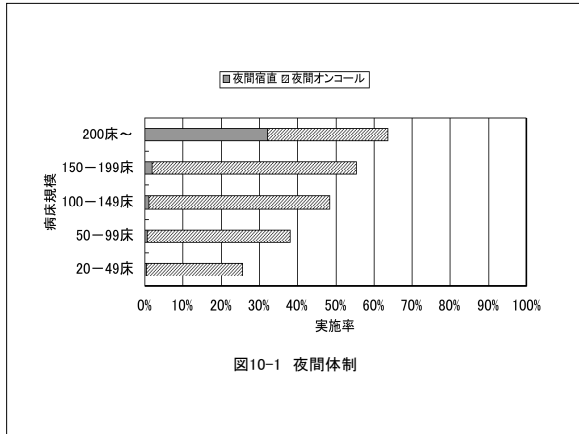


図10-1 夜間体制

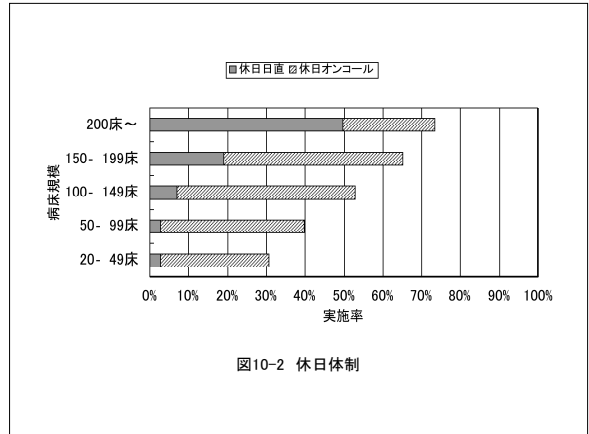


図10-2 休日体制

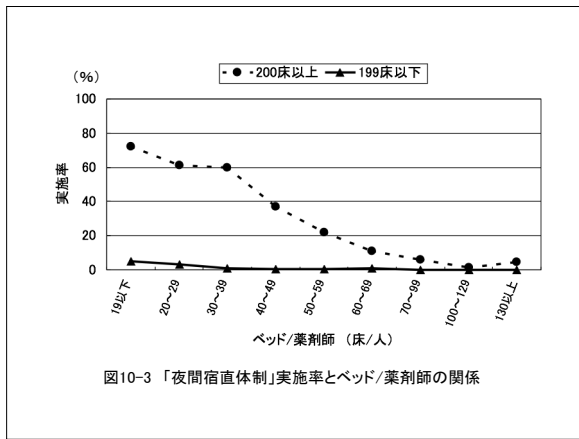


図10-3 「夜間宿直体制」実施率とベッド/薬剤師の関係

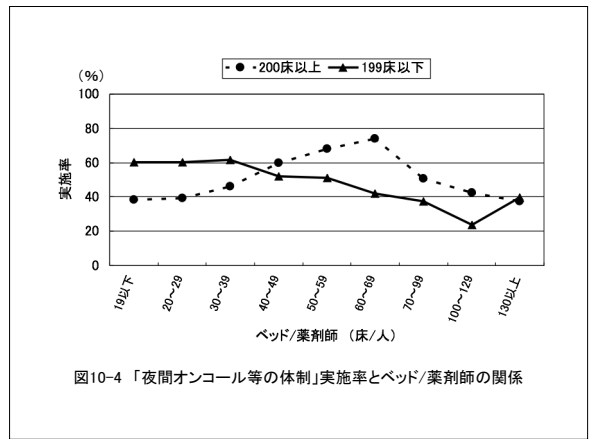


図10-4 「夜間オンコール等の体制」実施率とベッド/薬剤師の関係

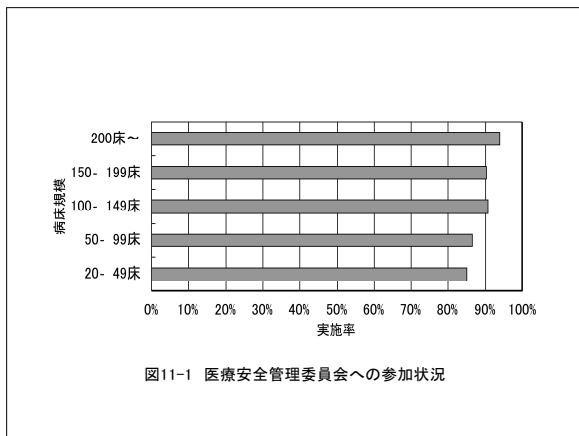


図11-1 医療安全管理委員会への参加状況

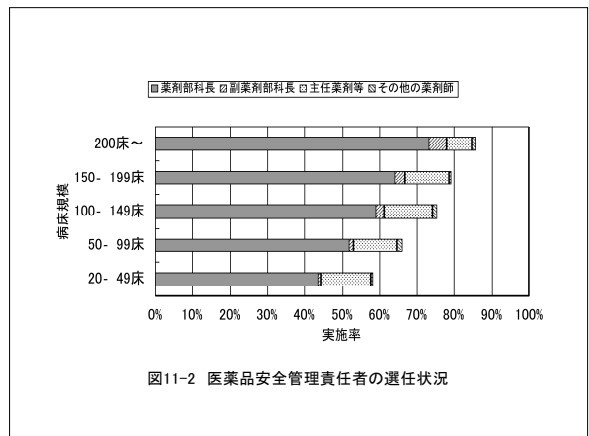


図11-2 医薬品安全管理責任者の選任状況

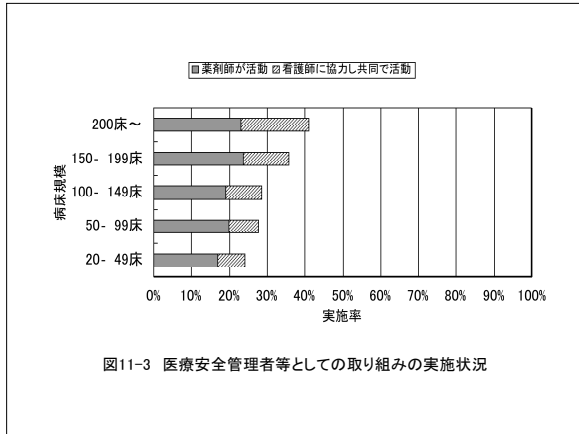


図11-3 医療安全管理者等としての取り組みの実施状況

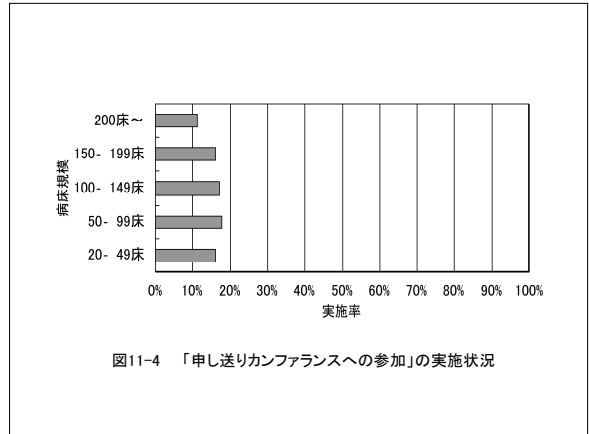


図11-4 「申し送りカンファランスへの参加」の実施状況

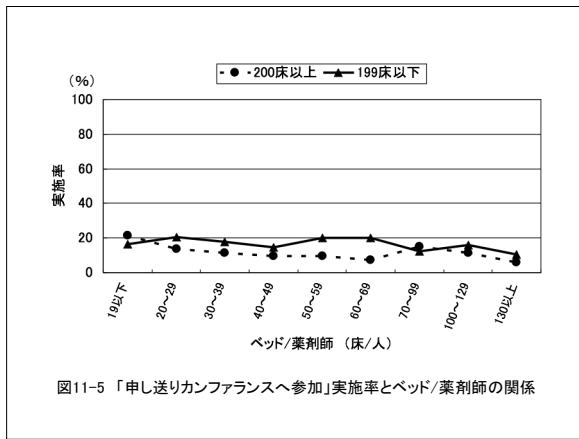


図11-5 「申し送りカンファランスへ参加」実施率とベッド/薬剤師の関係

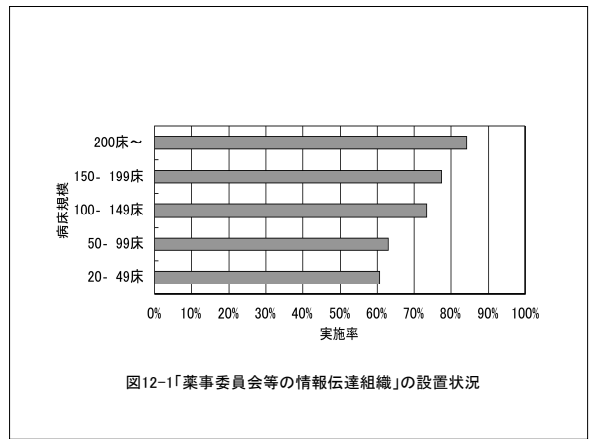


図12-1 「薬事委員会等の情報伝達組織」の設置状況

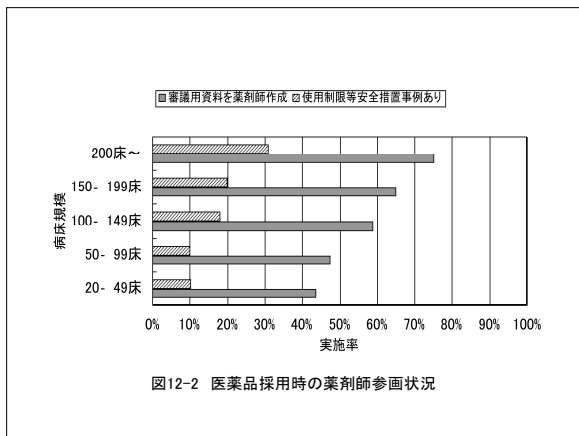


図12-2 医薬品採用時の薬剤師参画状況

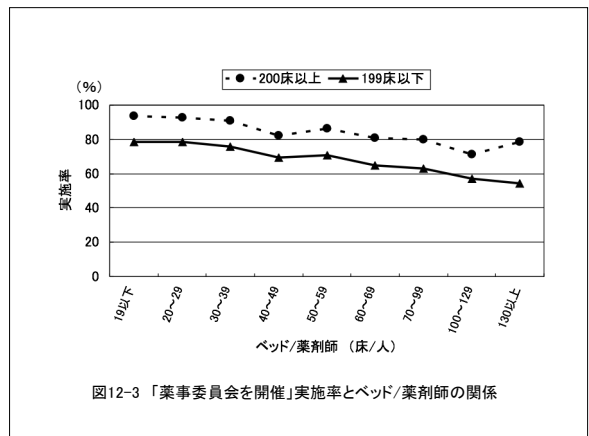


図12-3 「薬事委員会を開催」実施率とベッド/薬剤師の関係

